

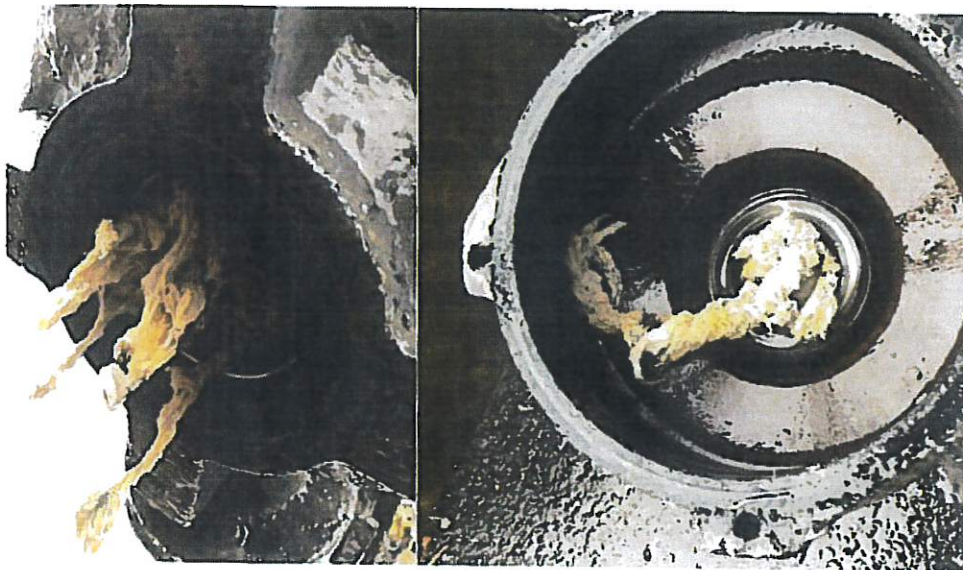


City of Bedford

Office of the Mayor

Samuel J. Craig

1. Property owners are responsible for maintaining sewer laterals to the main. Excavation permit and bond are required when digging in or disturbing any street, alley or sidewalk. The Planning Department at 1102 16th Street Bedford, IN, 812-275-1631 issues those permits.
2. Property owners are responsible for clearing blockages in the entire length of the sewer laterals that serve their property. Following are some simple steps you can follow to prevent sewer backups on your property:
 - **DON'T** dispose of grease in the drain
 - **DON'T** flush paper products (disposable diapers, paper towels, etc.)
 - **DON'T** plant trees near your sewer lateral
 - **DON'T** connect french drains, roof downspouts, sump pumps, driveways, parking lots or other sources of surface runoff or groundwater directly into the sewer line. This violates city ordinance and can be fined not less than \$100 or nor more than \$2,500
 - **DO** install a Backwater Prevention Valve
 - **DO** maintain the cleanout on your property



January 2023 - February 2023

January 2023							February 2023						
Su	Mo	Tu	We	Th	Fr	Sa	Su	Mo	Tu	We	Th	Fr	Sa
1	2	3	4	5	6	7	8	9	10	11	12	13	14
8	9	10	11	12	13	14	15	16	17	18	19	20	21
15	16	17	18	19	20	21	22	23	24	25	26	27	28
22	23	24	25	26	27	28	29	30	31				

SUNDAY	MONDAY	TUESDAY	WEDNESDAY	THURSDAY	FRIDAY	SATURDAY
Jan 22	23	24	25	26	27	28
	MON TRASH ROUTE MONDAY RECYCLE 12:00pm CLOSED 1PM	TUES TRASH ROUTE TUESDAY RECYCLE 12:00pm CLOSED 1PM	WED RECYCLE WED TRASH ROUTE 12:00pm CLOSED 1PM	THUR TRASH ROUTE THURSDAY RECYCLE 12:00pm CLOSED 1PM	FRI TRASH ROUTE FRIDAY RECYCLE 12:00pm CLOSED 1PM	
29	30	31	Feb 1	2	3	4
	MON TRASH ROUTE 12:00pm CLOSED 1PM	TUES TRASH ROUTE 12:00pm CLOSED 1PM	WED TRASH ROUTE 12:00pm CLOSED 1PM	THUR TRASH ROUTE 12:00pm CLOSED 1PM	FRI TRASH ROUTE 12:00pm CLOSED 1PM	
5	6	7	8	9	10	11
A UTILITY BILL DUE PAY IN DROP BOX TO AVOID PENALTY	MON TRASH ROUTE MONDAY RECYCLE 12:00pm CLOSED 1PM	TUES TRASH ROUTE TUESDAY RECYCLE 12:00pm CLOSED 1PM	WED RECYCLE WED TRASH ROUTE 12:00pm CLOSED 1PM	THUR TRASH ROUTE THURSDAY RECYCLE 12:00pm CLOSED 1PM	FRI TRASH ROUTE FRIDAY RECYCLE 12:00pm CLOSED 1PM	
12	13	14	15	16	17	18
	MON TRASH ROUTE 12:00pm CLOSED 1PM	TUES TRASH ROUTE 12:00pm CLOSED 1PM	WED TRASH ROUTE 12:00pm CLOSED 1PM	THUR TRASH ROUTE 12:00pm CLOSED 1PM	FRI TRASH ROUTE 12:00pm CLOSED 1PM	
19	20	21	22	23	24	25
	CITY OFFICES CLOSED MON TRASH ROUTE NO MONDAY RECYCLE	MON/TUES RECYCLE TUES TRASH ROUTE 12:00pm CLOSED 1PM	WED RECYCLE WED TRASH ROUTE 12:00pm CLOSED 1PM	THUR TRASH ROUTE THURSDAY RECYCLE 12:00pm CLOSED 1PM	FRI TRASH ROUTE FRIDAY RECYCLE 12:00pm CLOSED 1PM	